

**BISHOP INTERNATIONAL AIRPORT AUTHORITY
AIRLINE PASSENGER COMPARISON
CALENDAR YEARS 2005 AND 2006**

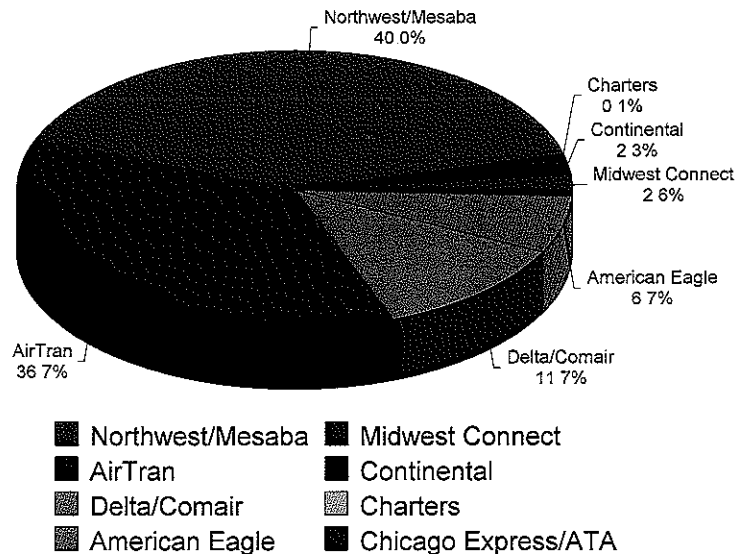
ENPLANEMENTS	NORTHWEST/MESABA			AIRTRAN			CHICAGO EXPRESS/ATA			DELTA/COMAIR		
	2005	2006	% Change	2005	2006	% Change	2005	2006	% Change	2005	2006	% Change
January	21,866	18,555	-15.14%	14,650	18,877	28.85%	3,762	0	N/A	5,465	5,910	8.14%
February	22,752	22,011	-3.26%	17,022	21,252	24.85%	5,154	0	N/A	6,691	4,493	-32.85%
March	27,705	27,591	-0.41%	21,200	23,968	13.06%	4,406	0	N/A	7,753	4,910	-36.67%
April	21,299	23,078	8.35%	16,545	19,770	19.49%	0	0	N/A	5,908	3,912	-33.78%
May	17,805	18,300	2.78%	15,673	13,711	-12.52%	0	0	N/A	6,728	4,687	-30.34%
June	17,920	16,142	-9.92%	17,181	12,656	-26.34%	0	0	N/A	7,045	5,099	-27.62%
July	18,149	13,987	-22.93%	18,237	14,500	-20.49%	0	0	N/A	6,673	5,627	-15.68%
August	16,284	14,285	-12.28%	17,971	13,666	-23.96%	0	0	N/A	7,081	5,416	-23.51%
September	16,141	14,334	-11.20%	15,563	11,487	-26.19%	0	0	N/A	5,605	4,599	-17.95%
October	17,049	16,048	-5.87%	18,336	13,425	-26.78%	0	0	N/A	6,113	6,302	3.09%
November	17,703	13,919	-21.37%	19,596	14,864	-24.15%	0	0	N/A	5,773	6,317	9.42%
December	18,781	16,011	-14.75%	19,631	18,281	-6.88%	0	0	N/A	5,380	5,569	3.51%
Through December	233,454	214,261	-8.22%	211,605	196,457	-7.16%	13,322	0	N/A	76,215	62,841	-17.55%

ENPLANEMENTS	CHARTERS			MIDWEST CONNECT			CONTINENTAL			AMERICAN EAGLE		
	2005	2006	% Change	2005	2006	% Change	2005	2006	% Change	2005	2006	% Change
January	0	0	N/A	952	1,124	18.07%	609	781	28.24%	0	2,415	N/A
February	394	0	N/A	981	1,082	10.30%	853	921	7.97%	0	2,342	N/A
March	460	0	N/A	969	1,176	21.36%	1,020	988	-3.14%	0	2,585	N/A
April	0	0	N/A	977	1,088	11.36%	641	1,188	85.34%	0	2,397	N/A
May	0	0	N/A	1,081	1,099	1.67%	653	989	51.45%	0	2,322	N/A
June	0	0	N/A	1,092	1,257	15.11%	692	1,019	47.25%	0	2,864	N/A
July	0	0	N/A	1,229	1,106	-10.01%	890	1,308	46.97%	0	3,414	N/A
August	0	0	N/A	1,319	1,347	2.12%	776	1,318	69.85%	0	3,482	N/A
September	0	151	N/A	1,203	1,022	-15.05%	483	795	64.60%	0	3,483	N/A
October	0	0	N/A	1,180	1,173	-0.59%	576	901	56.42%	0	3,631	N/A
November	0	133	N/A	1,125	1,202	6.84%	675	973	44.15%	0	3,617	N/A
December	0	0	N/A	1,100	1,079	-1.91%	929	1,095	17.87%	1,247	3,318	166.08%
Through December	854	284	N/A	13,208	13,755	4.14%	8,797	12,276	39.55%	1,247	35,870	100.00%

**ENPLANEMENT SHARE BY AIRLINE
Calendar Year 2006**

Latest National Average -1.4% Aug 2006
2006 Annual National Average

	TOTAL		
	2005	2006	% Change
January	47,304	47,662	0.76%
February	53,847	52,101	-3.24%
March	63,513	61,218	-3.61%
April	45,370	51,433	13.36%
May	41,940	41,108	-1.98%
June	43,930	39,037	-11.14%
July	45,178	39,942	-11.59%
August	43,431	39,514	-9.02%
September	38,995	35,871	-8.01%
October	43,254	41,460	-4.10%
November	44,872	41,025	-8.57%
December	47,068	45,353	-3.64%
Through December	558,702	535,744	-4.11%
Total Year	558,702	535,744	



**BISHOP INTERNATIONAL AIRPORT AUTHORITY
AIRLINE LOAD FACTOR ANALYSIS
DECEMBER 2006**

2005

2006

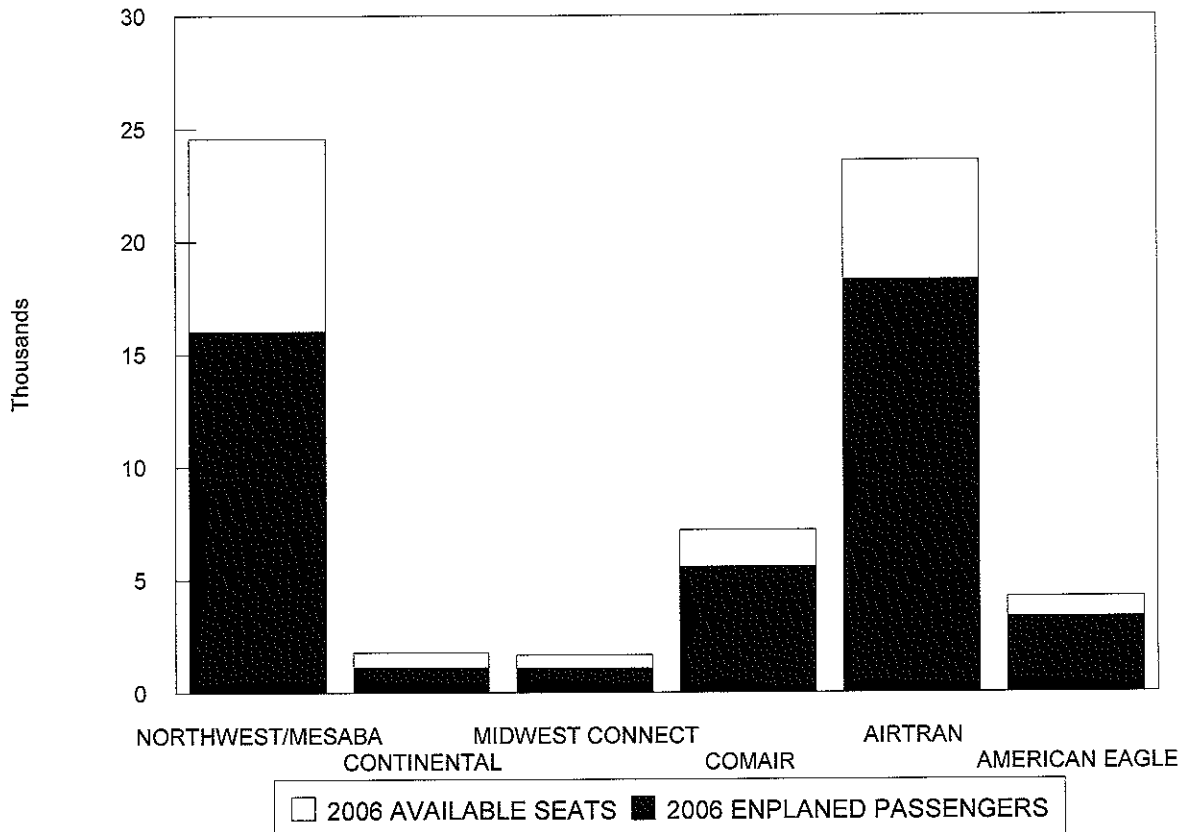
AIRLINE	2005			2006		
	AVAILABLE SEATS	ENPLANED PAX	LOAD FACTOR	AVAILABLE SEATS	ENPLANED PAX	LOAD FACTOR
NORTHWEST/MESABA	29,447	18,781	63.78%	24,560	16,011	65.19%
CONTINENTAL	1,368	929	67.91%	1,786	1,095	61.31%
MIDWEST CONNECT	1,767	1,100	62.25%	1,672	1,079	64.53%
COMAIR	8,850	5,380	60.79%	7,200	5,569	77.35%
AIRTRAN	28,620	19,631	68.59%	23,587	18,281	77.50%
AMERICAN EAGLE	1,548	1,247	N/A	4,230	3,318	78.44%
ALL AIRLINES	71,600	47,068	65.74%	63,035	45,353	71.95%

NOTE: CHARTER

133

Enplanements vs Available Seats

Current Month

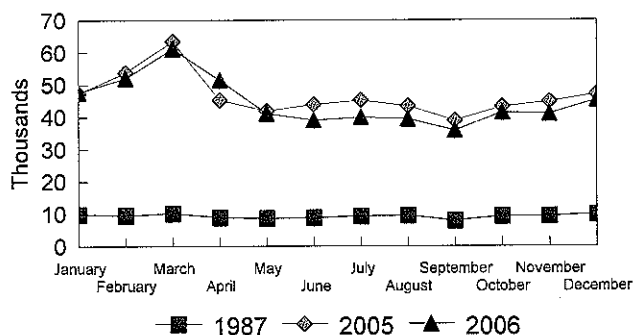


**BISHOP INTERNATIONAL AIRPORT
PASSENGER STATISTICAL COMPARISON
FOR THE YEARS 1987, 2005, 2006**

ENPLANED PASSENGERS				% CHANGE	% CHANGE
	1987	2005	2006	1987/2006	2005/2006
January	10,008	47,304	47,662	376.24%	0.76%
February	9,544	53,847	52,101	445.90%	-3.24%
March	10,287	63,513	61,218	495.10%	-3.61%
April	8,967	45,370	51,433	473.58%	13.36%
May	8,685	41,940	41,108	373.32%	-1.98%
June	8,891	43,930	39,037	339.06%	-11.14%
July	9,372	45,178	39,942	326.18%	-11.59%
August	9,586	43,431	39,514	312.21%	-9.02%
September	8,038	38,995	35,871	346.27%	-8.01%
October	9,350	43,254	41,480	343.64%	-4.10%
November	9,402	44,872	41,025	336.34%	-8.57%
December	10,010	47,068	45,353	353.08%	-3.64%
Total thru December	112,140	558,702	535,744	377.75%	-4.11%
Total for Year	112,140	558,702	535,744		

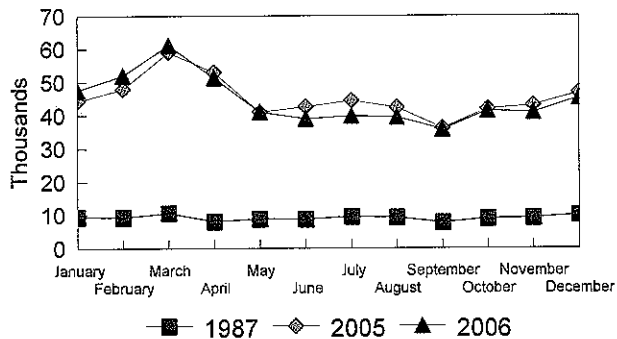
ENPLANEMENT COMPARISON

Pre-Authority vs 2005 & 2006



DEPLANEMENT COMPARISON

Pre-Authority vs 2005 & 2006



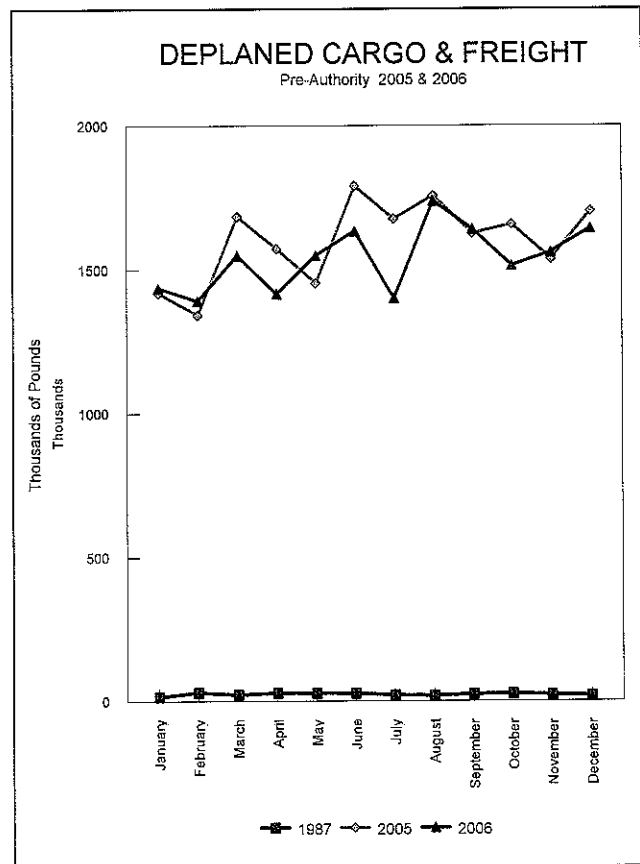
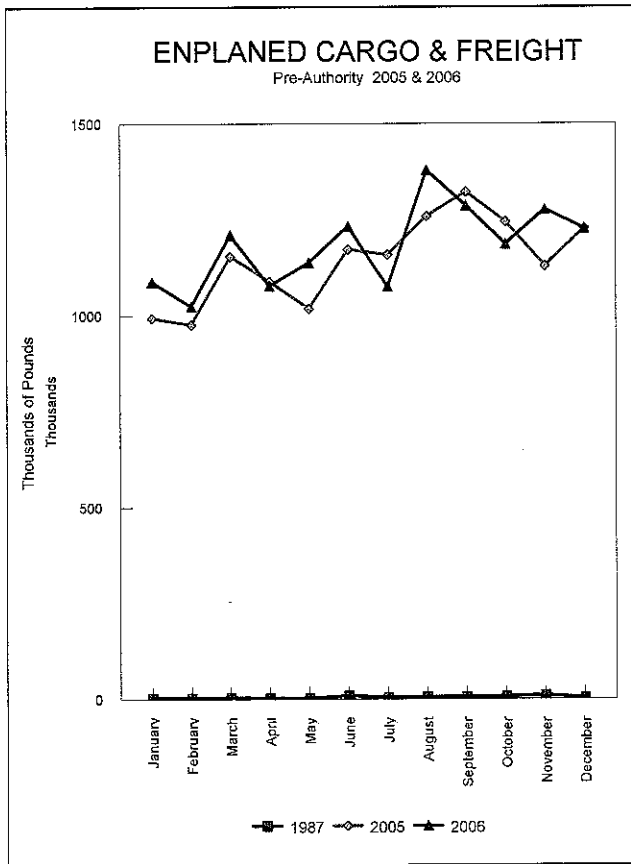
DEPLANED PASSENGERS				% CHANGE	% CHANGE
	1987	2005	2006	1987/2006	2005/2006
January	9,542	44,339	44,641	367.84%	0.68%
February	9,380	48,077	47,860	410.23%	-0.45%
March	10,646	59,132	59,106	455.19%	-0.04%
April	8,139	53,049	56,675	596.34%	6.84%
May	8,969	41,084	44,305	393.98%	7.84%
June	8,795	42,763	39,103	344.60%	-8.56%
July	9,592	44,564	39,101	307.64%	-12.26%
August	9,331	42,480	38,355	311.05%	-9.71%
September	7,740	36,282	34,817	349.83%	-4.04%
October	9,005	42,006	38,797	330.84%	-7.64%
November	9,235	43,124	39,384	326.46%	-8.67%
December	10,114	46,870	44,840	343.35%	-4.33%
Total thru December	110,488	543,770	526,984	376.96%	-3.09%
Total for Year	110,488	543,770	526,984		

Total all current month	222,628	1,102,472	1,062,728
Total all for the year	222,628	1,102,472	1,062,728

BISHOP INTERNATIONAL AIRPORT AIR CARGO AND FREIGHT COMPARISON Pre-Authority(1987) 2005 & 2006

TOTAL AIR CARGO AND FREIGHT

	ENPLANED CARGO & FREIGHT			% Change		DEPLANED CARGO & FREIGHT			% Change	
	1987	2005	2006	87-2006	2005-2006	1987	2005	2006	87-2006	2005-2006
January	3,660	993,790	1,088,226	29632.95%	9.50%	16,557	1,418,574	1,436,718	8577.41%	1.28%
February	3,582	975,957	1,023,969	28486.52%	4.92%	30,397	1,343,115	1,390,693	4475.10%	3.54%
March	4,268	1,153,370	1,210,654	28265.84%	4.92%	25,013	1,685,449	1,548,727	6629.79%	-8.11%
April	3,747	1,089,026	1,076,948	28641.61%	-1.11%	30,004	1,572,028	1,415,342	4603.07%	-9.97%
May	3,219	1,017,840	1,137,944	35250.85%	11.80%	28,459	1,453,664	1,549,082	5343.21%	6.56%
June	9,901	1,172,669	1,233,149	12354.79%	5.16%	27,151	1,791,082	1,633,749	5920.82%	-8.78%
July	5,316	1,158,399	1,075,838	20137.74%	-7.12%	21,325	1,673,731	1,400,600	6467.88%	-16.42%
August	6,299	1,259,134	1,379,293	21797.02%	9.54%	19,064	1,756,862	1,738,451	9019.03%	-1.05%
September	6,509	1,322,501	1,286,360	19662.79%	-2.73%	23,494	1,626,443	1,640,858	6884.16%	0.89%
October	7,148	1,244,965	1,186,233	16495.31%	-4.72%	26,707	1,657,027	1,513,042	5567.34%	-8.69%
November	10,254	1,128,923	1,275,942	12343.36%	13.02%	22,817	1,536,113	1,560,705	6740.10%	1.60%
December	3,905	1,227,686	1,225,958	31294.57%	-0.14%	19,423	1,702,378	1,642,364	8355.77%	-3.54%
Total thru December	67,808	13,744,672	14,200,514	20842.34%	3.32%	288,485	19,218,666	18,470,331	6302.53%	-3.80%
Annual Total	67,808	13,744,672	14,200,514			288,485	19,218,666	18,470,331		



FEDEX

	ENPLANED CARGO & FREIGHT					DEPLANED CARGO & FREIGHT				
	1987	2005	2006	% Change 87-2006	% Change 2005-2006	1987	2005	2006	% Change 87-2006	% Change 2005-2006
January	0	820,266	846,586	N/A	3.21%	0	894,696	1,075,249	N/A	20.18%
February	0	788,793	807,443	N/A	2.36%	0	903,293	1,060,891	N/A	17.45%
March	0	901,179	956,159	N/A	6.10%	0	1,135,802	1,125,765	N/A	-0.88%
April	0	903,383	834,086	N/A	-7.67%	0	1,086,245	1,010,983	N/A	-6.93%
May	0	839,431	892,287	N/A	6.30%	0	1,000,632	1,091,265	N/A	9.06%
June	0	966,640	975,423	N/A	0.91%	0	1,165,010	1,183,785	N/A	1.61%
July	0	970,182	819,888	N/A	-15.49%	0	1,102,833	991,395	N/A	-10.10%
August	0	1,025,619	1,109,301	N/A	8.16%	0	1,206,053	1,289,831	N/A	6.95%
September	0	1,093,365	1,018,899	N/A	-6.81%	0	1,164,631	1,195,491	N/A	2.65%
October	0	941,722	950,816	N/A	0.97%	0	1,114,312	1,117,889	N/A	0.32%
November	0	891,183	865,703	N/A	-2.86%	0	1,138,672	1,062,756	N/A	-6.67%
December	0	965,392	862,653	N/A	-10.64%	0	1,220,450	1,115,929	N/A	-8.56%
Total thru December	0	11,107,155	10,939,244	N/A	-1.51%	0	13,132,629	13,321,229	N/A	1.44%

GVA

	ENPLANED CARGO & FREIGHT					DEPLANED CARGO & FREIGHT				
	1987	2005	2006	% Change 87-2006	% Change 2005-2006	1987	2005	2006	% Change 87-2006	% Change 2005-2006
January	0	5,964	23,683	N/A	297.10%	0	70,429	17,832	N/A	-74.68%
February	0	18,651	5,350	N/A	-71.32%	0	10,035	879	N/A	-91.24%
March	0	66,946	3,646	N/A	-94.55%	0	29,304	24,588	N/A	-16.09%
April	0	14,440	4,112	N/A	-71.52%	0	13,910	10,506	N/A	-24.47%
May	0	12,226	5,341	N/A	-56.31%	0	6,270	53,309	N/A	750.22%
June	0	22,215	24,863	N/A	11.92%	0	101,508	10,436	N/A	-89.72%
July	0	25,947	1,157	N/A	-95.54%	0	74,621	6,633	N/A	-91.11%
August	0	30,501	11,749	N/A	-61.48%	0	38,189	3,765	N/A	-90.14%
September	0	28,119	3,937	N/A	-86.00%	0	59,468	12,183	N/A	-79.51%
October	0	31,736	3,452	N/A	-89.12%	0	148,462	1,058	N/A	-99.29%
November	0	4,311	6,538	N/A	51.66%	0	4,033	10,189	N/A	152.64%
December	0	17,745	14,017	N/A	-21.01%	0	47,396	7,874	N/A	-83.39%
Total thru December	0	278,801	107,845	N/A	-61.32%	0	603,625	159,252	N/A	-73.62%

AIRBORNE

	ENPLANED CARGO & FREIGHT					DEPLANED CARGO & FREIGHT				
	1987	2005	2006	% Change 87-2006	% Change 2005-2006	1987	2005	2006	% Change 87-2006	% Change 2005-2006
January	0	130,300	180,458	N/A	38.49%	0	431,359	329,759	N/A	-23.55%
February	0	126,641	168,113	N/A	32.75%	0	413,457	316,465	N/A	-23.46%
March	0	138,637	199,886	N/A	44.18%	0	494,829	384,276	N/A	-22.34%
April	0	128,667	195,936	N/A	52.28%	0	448,299	376,079	N/A	-16.11%
May	0	118,031	194,811	N/A	65.05%	0	420,692	386,210	N/A	-8.20%
June	0	131,695	182,372	N/A	38.48%	0	501,922	423,889	N/A	-15.55%
July	0	114,438	215,275	N/A	88.11%	0	477,105	387,096	N/A	-18.87%
August	0	146,820	209,890	N/A	42.96%	0	488,145	425,578	N/A	-12.82%
September	0	149,962	224,822	N/A	49.92%	0	377,610	419,314	N/A	11.04%
October	0	222,880	189,284	N/A	-15.07%	0	369,553	376,435	N/A	1.86%
November	0	186,924	366,010	N/A	95.81%	0	372,420	474,857	N/A	27.51%
December	0	199,877	311,516	N/A	55.85%	0	420,908	500,327	N/A	18.87%
Total thru December	0	1,794,872	2,638,373	N/A	47.00%	0	5,216,299	4,800,285	N/A	-7.98%

AMERICAN EAGLE

	ENPLANED CARGO & FREIGHT					DEPLANED CARGO & FREIGHT				
	1987	2005	2006	% Change 87-2006	% Change 2005-2006	1987	2005	2006	% Change 87-2006	% Change 2005-2006
January	0	0	1	N/A	N/A	0	0	14	N/A	N/A
February	0	0	2	N/A	N/A	0	0	8	N/A	N/A
March	0	0	0	N/A	N/A	0	0	240	N/A	N/A
April	0	0	70	N/A	N/A	0	0	206	N/A	N/A
May	0	0	92	N/A	N/A	0	0	39	N/A	N/A
June	0	0	53	N/A	N/A	0	0	490	N/A	N/A
July	0	0	204	N/A	N/A	0	0	70	N/A	N/A
August	0	0	197	N/A	N/A	0	0	204	N/A	N/A
September	0	0	414	N/A	N/A	0	0	248	N/A	N/A
October	0	0	166	N/A	N/A	0	0	134	N/A	N/A
November	0	0	72	N/A	N/A	0	0	210	N/A	N/A
December	0	0	0	N/A	N/A	0	0	0	N/A	N/A
Total thru December	0	0	1,271	N/A	N/A	0	0	1,863	N/A	N/A

AIR CARGO AND FREIGHT COMPARISON

NORTHWEST (MESABA)

	ENPLANED CARGO & FREIGHT			% Change	% Change	DEPLANED CARGO & FREIGHT			% Change	% Change
	1987	2005	2006	87-2006	2005-2006	1987	2005	2006	87-2006	2005-2006
January	120	485	108	-10 00%	-77 73%	837	1 446	1 369	63 56%	-5 33%
February	310	1 061	162	-47 74%	-84 73%	1 649	246	392	-76 23%	59 35%
March	256	368	243	-5 08%	-33 97%	2 098	1 828	324	-84 56%	-82 28%
April	0	412	204	N/A	-50 49%	0	676	107	N/A	-84 17%
May	0	825	158	N/A	-80 85%	0	1 667	367	N/A	-77 98%
June	0	2 838	131	N/A	-95 38%	0	386	174	N/A	-54 92%
July	0	95	125	N/A	31 58%	0	603	669	N/A	10 95%
August	0	466	397	N/A	-14 81%	0	1 971	127	N/A	-93 56%
September	0	539	211	N/A	-60 85%	0	2 432	413	N/A	-83 02%
October	0	113	832	N/A	636 28%	0	534	216	N/A	-59 55%
November	0	249	71	N/A	-71 49%	0	552	192	N/A	-65 22%
December	0	75	272	N/A	262 67%	0	134	2 586	N/A	1829 85%
Total thru December	686	7,526	2 914	324.78%	-61 28%	4,584	12,475	6 936	51.31%	-44.40%

MIDWEST CONNECT

	ENPLANED CARGO & FREIGHT			% Change	% Change	DEPLANED CARGO & FREIGHT			% Change	% Change
	1987	2005	2006	87-2006	2005-2006	1987	2005	2006	87-2006	2005-2006
January	0	1 155	303	N/A	-73.77%	0	2 262	1 275	N/A	-43 63%
February	0	844	0	N/A	N/A	0	2 191	697	N/A	-68 19%
March	0	966	30	N/A	-96 89%	0	3,253	815	N/A	-74 95%
April	0	863	1	N/A	-99 88%	0	1 898	941	N/A	-50 42%
May	0	45	5	N/A	-88.89%	0	33	1 336	N/A	3948 48%
June	0	932	0	N/A	N/A	0	2 330	0	N/A	N/A
July	0	818	0	N/A	N/A	0	2 274	27	N/A	-98 81%
August	0	923	0	N/A	N/A	0	2 158	0	N/A	N/A
September	0	799	17	N/A	-97 87%	0	2 236	474	N/A	-78 80%
October	0	747	42	N/A	-94.38%	0	1 830	661	N/A	-63 88%
November	0	743	0	N/A	N/A	0	4 011	0	N/A	N/A
December	0	610	0	N/A	N/A	0	2 433	527	N/A	-78 34%
Total thru December	0	9,445	398	N/A	-95 79%	0	26,909	6,753	N/A	-74.90%

CSA Air, Inc.

	ENPLANED CARGO & FREIGHT			% Change	% Change	DEPLANED CARGO & FREIGHT			% Change	% Change
	1987	2005	2006	87-2006	2005-2006	1987	2005	2006	87-2006	2005-2006
January	0	35 620	37 087	N/A	4 12%	0	18 382	11 120	N/A	-39 51%
February	0	39 977	42 899	N/A	7 31%	0	13 893	11 111	N/A	-20 02%
March	0	45 774	50 690	N/A	10 74%	0	20 433	12 719	N/A	-37 75%
April	0	41 261	42 539	N/A	3 10%	0	21 000	16 320	N/A	-22 29%
May	0	47 282	45 250	N/A	-4 30%	0	24 370	16 556	N/A	-32 06%
June	0	48 349	50 307	N/A	4 05%	0	19 926	14 775	N/A	-25 85%
July	0	46 419	39 189	N/A	-15 58%	0	18 295	14 710	N/A	-19 60%
August	0	54 805	47 759	N/A	-12 86%	0	20 346	18 946	N/A	-6 88%
September	0	49 717	38 060	N/A	-23 45%	0	20 066	12 635	N/A	-37 03%
October	0	47 767	41 641	N/A	-12 82%	0	22 336	16 649	N/A	-25 46%
November	0	45 515	37 548	N/A	-17 50%	0	16 425	12 501	N/A	-23 89%
December	0	43 987	37 500	N/A	-14 75%	0	11 257	15 121	N/A	34 33%
Total thru December	0	546,473	510,469	N/A	-6.59%	0	226,729	173,163	N/A	-23.63%

AIRIRAN

	ENPLANED CARGO & FREIGHT			% Change	% Change	DEPLANED CARGO & FREIGHT			% Change	% Change
	1987	2005	2006	87-2006	2005-2006	1987	2005	2006	87-2006	2005-2006
January	0	0	0	N/A	N/A	0	0	100	N/A	N/A
February	0	0	0	N/A	N/A	0	0	250	N/A	N/A
March	0	0	0	N/A	N/A	0	0	0	N/A	N/A
April	0	0	0	N/A	N/A	0	0	200	N/A	N/A
May	0	0	0	N/A	N/A	0	0	0	N/A	N/A
June	0	0	0	N/A	N/A	0	0	200	N/A	N/A
July	0	400	0	N/A	N/A	0	0	0	N/A	N/A
August	0	0	0	N/A	N/A	0	0	0	N/A	N/A
September	0	0	0	N/A	N/A	0	0	100	N/A	N/A
October	0	0	0	N/A	N/A	0	0	0	N/A	N/A
November	0	0	0	N/A	N/A	0	0	0	N/A	N/A
December	0	0	0	N/A	N/A	0	0	0	N/A	N/A
Total thru December	0	400	0	N/A	N/A	0	0	850	N/A	N/A

AIR CARGO AND FREIGHT COMPARISON

PRIOR CARRIERS

	ENPLANED CARGO & FREIGHT			% Change 87-2006	% Change 2005-2006	DEPLANED CARGO & FREIGHT			% Change 87-2006	% Change 2005-2006
	1987	2005	2006			1987	2005	2006		
January	3,540	0	0	N/A	N/A	15,720	0	0	N/A	N/A
February	3,272	0	0	N/A	N/A	28,748	0	0	N/A	N/A
March	4,012	0	0	N/A	N/A	20,915	0	0	N/A	N/A
April	3,747	0	0	N/A	N/A	30,094	0	0	N/A	N/A
May	3,219	0	0	N/A	N/A	28,459	0	0	N/A	N/A
June	9,901	0	0	N/A	N/A	27,135	0	0	N/A	N/A
July	5,316	0	0	N/A	N/A	21,325	0	0	N/A	N/A
August	6,299	0	0	N/A	N/A	19,064	0	0	N/A	N/A
September	6,509	0	0	N/A	N/A	23,494	0	0	N/A	N/A
October	7,148	0	0	N/A	N/A	26,707	0	0	N/A	N/A
November	10,254	0	0	N/A	N/A	22,817	0	0	N/A	N/A
December	3,905	0	0	N/A	N/A	19,423	0	0	N/A	N/A
Total thru December	67,122	0	0	N/A	N/A	283,901	0	0	N/A	N/A

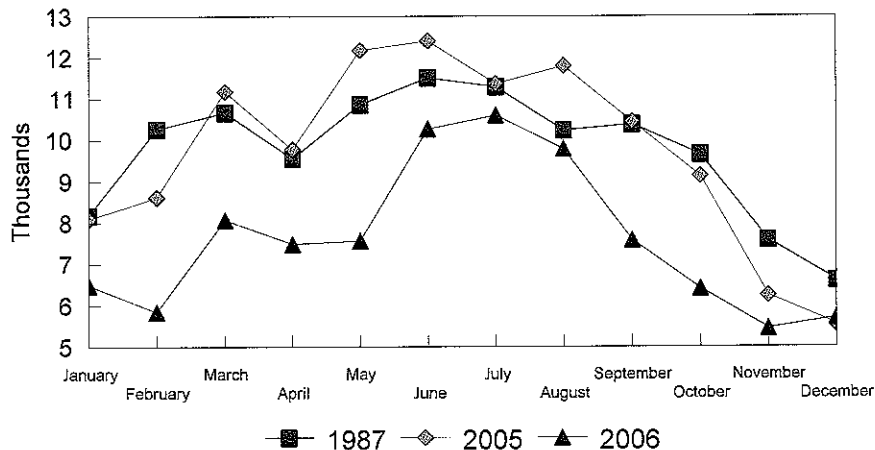
OPERATIONS STATISTICAL COMPARISON

FOR YEARS 1987, 2005 & 2006

	1987 OPERATIONS	2005 OPERATIONS	2006 OPERATIONS	CHANGE 1987/2006	CHANGE 2005/2006
January	8,177	8,094	6,486	-20.68%	-19.87%
February	10,270	8,612	5,841	-43.13%	-32.18%
March	10,677	11,177	8,072	-24.40%	-27.78%
April	9,562	9,778	7,493	-21.64%	-23.37%
May	10,870	12,182	7,570	-30.36%	-37.86%
June	11,514	12,403	10,271	-10.80%	-17.19%
July	11,296	11,365	10,603	-6.13%	-6.70%
August	10,240	11,803	9,790	-4.39%	-17.05%
September	10,389	10,450	7,584	-27.00%	-27.43%
October	9,656	9,136	6,407	-33.65%	-29.87%
November	7,592	6,246	5,447	-28.25%	-12.79%
December	6,608	5,551	5,704	-13.68%	2.76%
Total Through December	116,851	116,797	91,268	-21.89%	-21.86%
ANNUAL TOTAL	116,851	116,797	91,268		

OPERATIONS

Pre-Authority vs 2005 & 2006



**BISHOP INTERNATIONAL AIRPORT
AIR TRAFFIC RECORD 2006**

MONTH	ITINERANT AIRCRAFT				LOCAL AIRCRAFT			TOTAL OPERATIONS	CUMULATIVE OPERATIONS
	AIR CARRIER	AIR TAXI	GENERAL AVIATION	MILITARY	TOTAL ITINERANT	CIVILIAN	MILITARY		
JANUARY	1,088	1,056	1,451	7	3,602	2,884		2,884	6,486
FEBRUARY	1,021	851	1,325	10	3,207	2,624	10	2,634	5,841
MARCH	1,204	1,004	2,027	5	4,240	3,832		3,832	8,072
APRIL	1,116	932	2,013	14	4,075	3,404	14	3,418	7,493
MAY	902	1,025	1,957	17	3,901	3,669		3,669	7,570
JUNE	823	1,066	2,460	15	4,364	5,903	4	5,907	10,271
JULY	750	1,199	2,280	28	4,257	6,346		6,346	10,603
AUGUST	778	1,212	2,246	5	4,241	5,549		5,549	9,790
SEPTEMBER	823	1,060	1,992	43	3,918	3,654	12	3,666	7,584
OCTOBER	962	1,117	1,791	7	3,877	2,530		2,530	6,407
NOVEMBER	879	1,122	1,512	20	3,533	1,912	2	1,914	5,447
DECEMBER	984	1,091	1,431	6	3,512	2,192	0	2,192	5,704
TOTALS	11,330	12,735	22,485	177	46,727	44,499	42	44,541	91,268